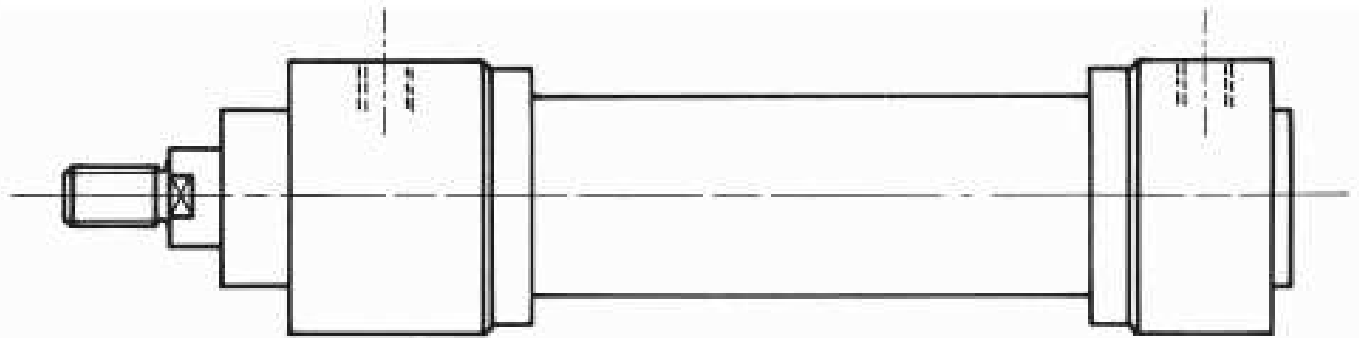


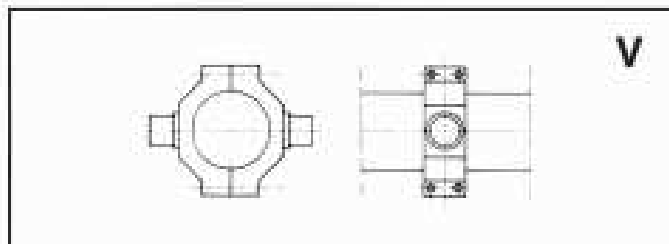
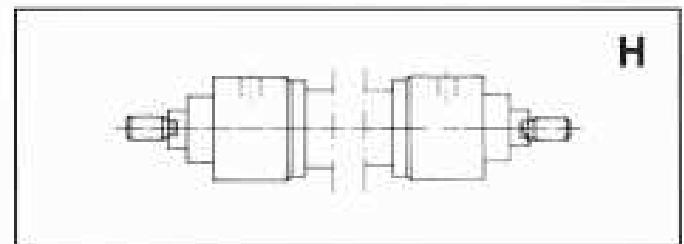
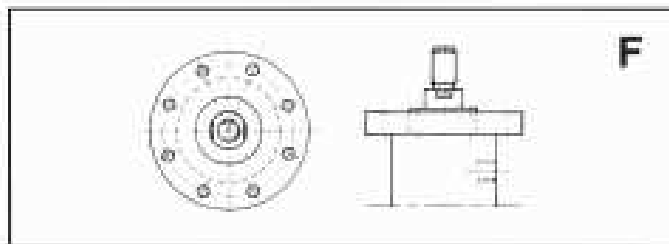
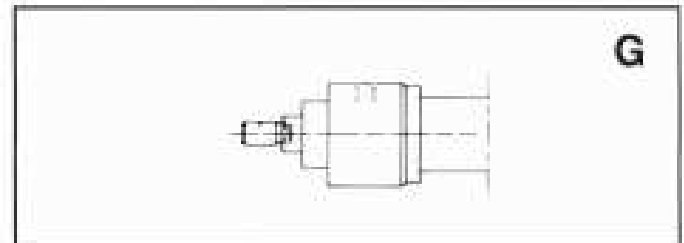
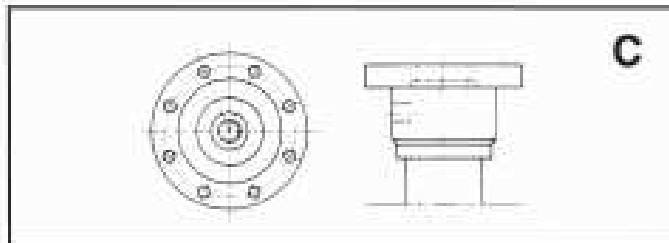
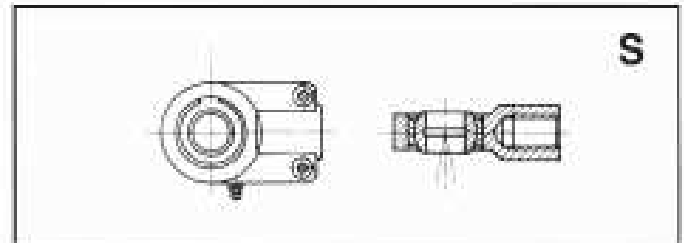
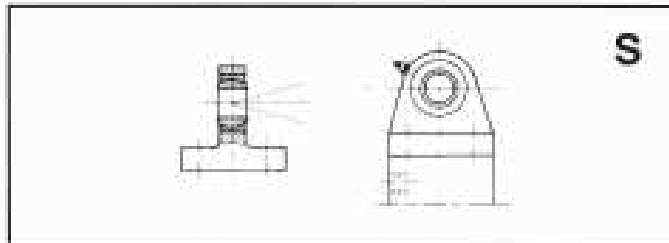
NH41





* Grundtyper/
Zylinderbefestigung/
Basic types

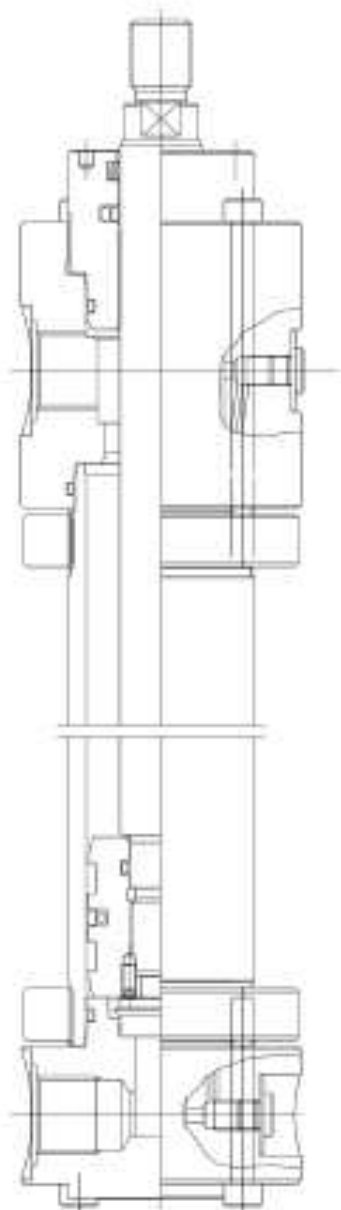
Stempelstangsophæng/
Kolbenstangenbefestigung/
Piston rod mounting





Technical specification

NH41



General:

NH 41 is a double acting hydraulic cylinder.
Application: Primarily industrial hydraulics, and similar heavy-duty operation.
Bore from $\varnothing 25$ - $\varnothing 200$ mm.

Construction:

(See sketch).

Cylinder tube:

Steel tube (SIS 2172).
Honed to Ra max. $0,3 \mu\text{m}$.
Internal tolerance H9.

Piston rod:

Centerless ground steel, (SIS 2142), which is hard-chrome plated min. $20 \mu\text{m}$. Hardness: min. 850 HV.
Ra max. $0,3 \mu\text{m}$.
External tolerance h9. Alternative Nickel/chrome. Also available in chrome plated acid proof material. Alternative materials can also be supplied.

Seals:

(Standard) See seal guidance.

Mountings:

The following mountings can be screwed onto the NH 41 basic cylinder:

Cylinder:

- F Front flange
- C Bottom flange
- S Spherical eye
- V Trunnion mounting

Rod:

- S Spherical eye
- G Tread

The above can be used in any combination. All external dimensions are in accordance with ISO 6020/1. The cylinder can be supplied with adjustable cushioning in both ends. Exception to above are dia. $\varnothing 25 + 32$ mm.

Connections:

Cylindrical BSP thread,
threaded length corresponding to standard fittings.

Operation pressure:

Operation Pressure: max. 160 bar.

Piston velocity:

Max. piston velocity: 1 m/s.
For higher velocities use special seals.

Operating temperature:

Temperature range: $- 20^{\circ}\text{C}$
to $+ 70^{\circ}\text{C}$.
For higher/lower temperatures use special seals.

Pressure medium:

Hydraulic oil on a mineral oil base. If another medium is to be used, please state when ordering.

Test:

The cylinders are pressure tested at 250 bar and tested for proper function before leaving the factory.

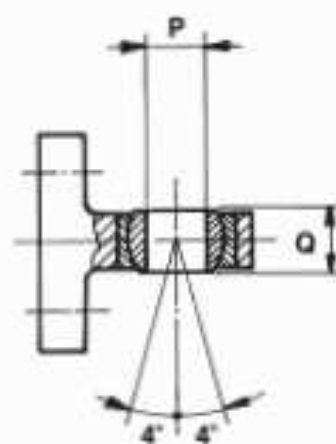
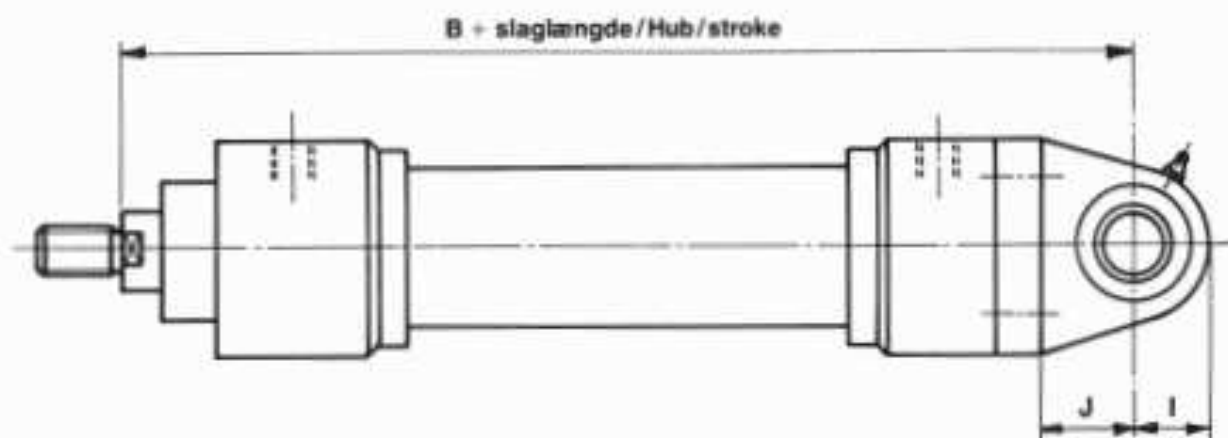
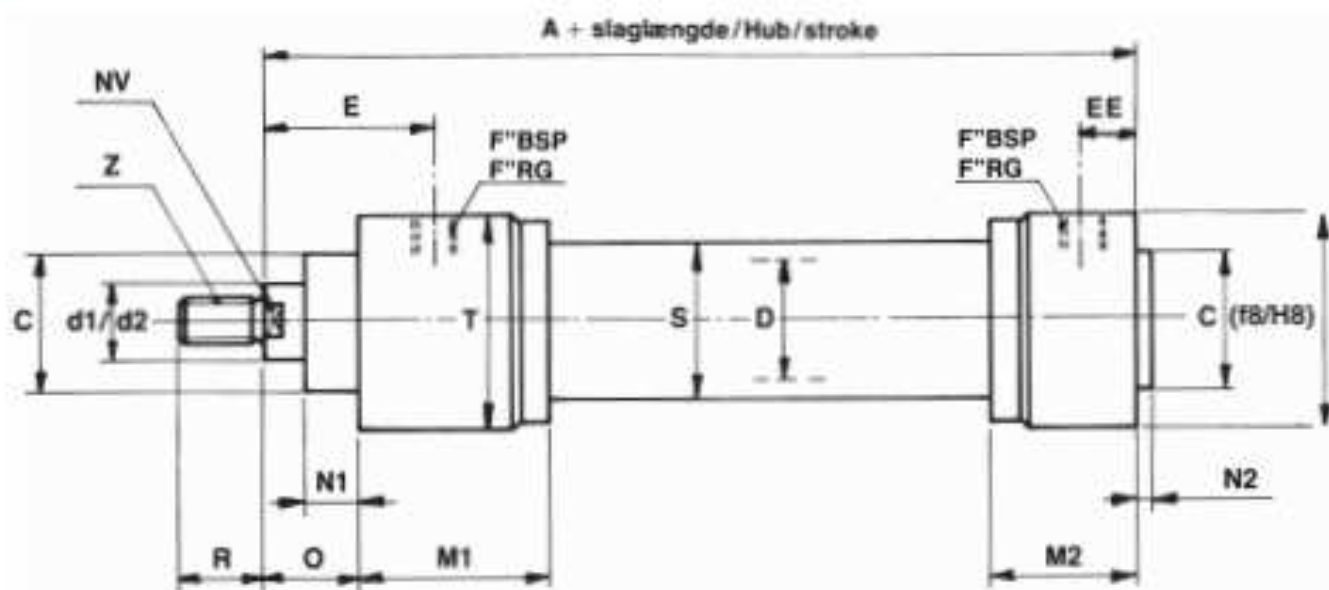
Order code:

See specification form 5.





Målskitse / Maßblatt / Dimension sketch NH41-S





Målskema / Maßtabelle / Dimension table

NH41-S

Index \ D	25	32	40	50	63	80	100	125	160	200
A	150	170	190	205	224	250	300	325	370	450
B	178	206	231	257	289	332	395	428	505	615
d1 / d2	14 / 18	18 / 22	22 / 28	28 / 36	36 / 45	45 / 56	56 / 70	70 / 90	90 / 110	110 / 140
C (F8/H8)	32	40	50	60	70	85	106	132	160	200
E	64	68	72	76	90	110	128	145	154	205
EE	13	15,5	18,5	19	21	21	29	27	35	43
F	1/4"	3/8"	1/2"	1/2"	3/4"	3/4"	1"	1"	1 1/4"	1 1/4"
I	16	20	25	32	40	50	63	71	90	112
J	16	20	25	32	40	50	63	71	90	112
M1	70	80	92	92	104	126	146	166	187	247
M2	38	44	52	57	64	66	86	86	107	127
N1	15	19	19	24	29	36	37	37	41	45
N2	3	4	4	4	5	5	6	6	7	8
NV (d1)	12	14	17	22	28	36	46	60	75	95
NV (d2)	14	17	22	28	36	46	60	75	95	120
O	28	32	32	38	45	54	57	60	66	75
P	12	16	20	25	32	40	50	63	80	100
Q	12	16	20	25	32	40	50	63	80	100
R (d1)	16	18	22	28	36	45	56	63	85	95
R (d2)	18	22	28	36	45	56	63	85	95	112
S	35	42	50	60	75	95	120	150	193	244
T	58	67	75	93	113	128	158	192	235	290
Z (d1)	M12x1,25	M14x1,5	M16x1,5	M20x1,5	M27x2	M33x2	M42x2	M48x2	M64x3	M80x3
Z (d2)	M14x1,5	M16x1,5	M20x1,5	M27x2	M33x2	M42x2	M48x2	M64x3	M80x3	M100x3

Alla angivna mål är i (mm). Ret till ändringar förbehålles.

Alla angivna mått är i (mm). Wir behalten uns das Recht auf Änderungen vor.

Unless otherwise specified, all dimensions are in (mm). Right to alterations reserved.

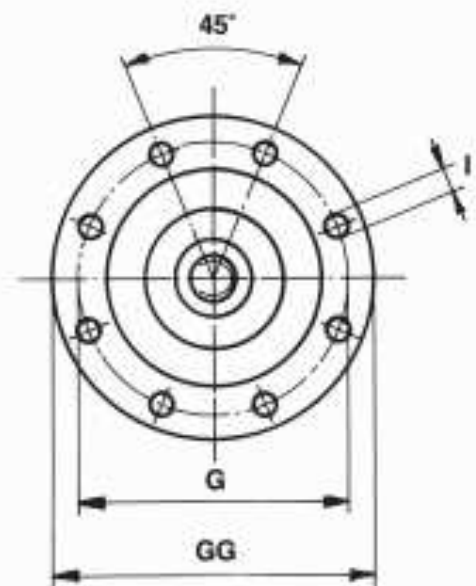
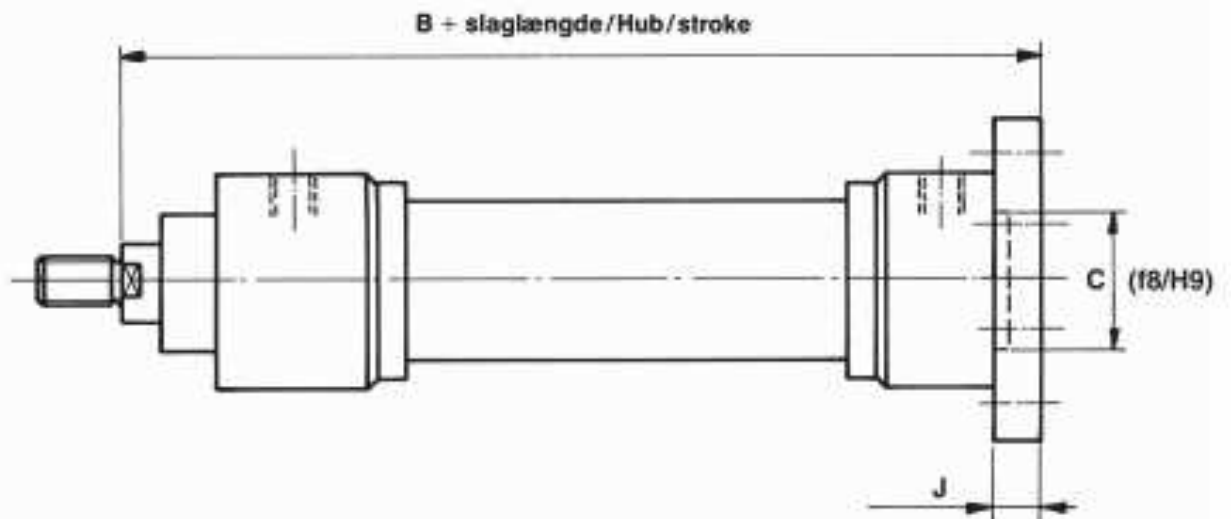
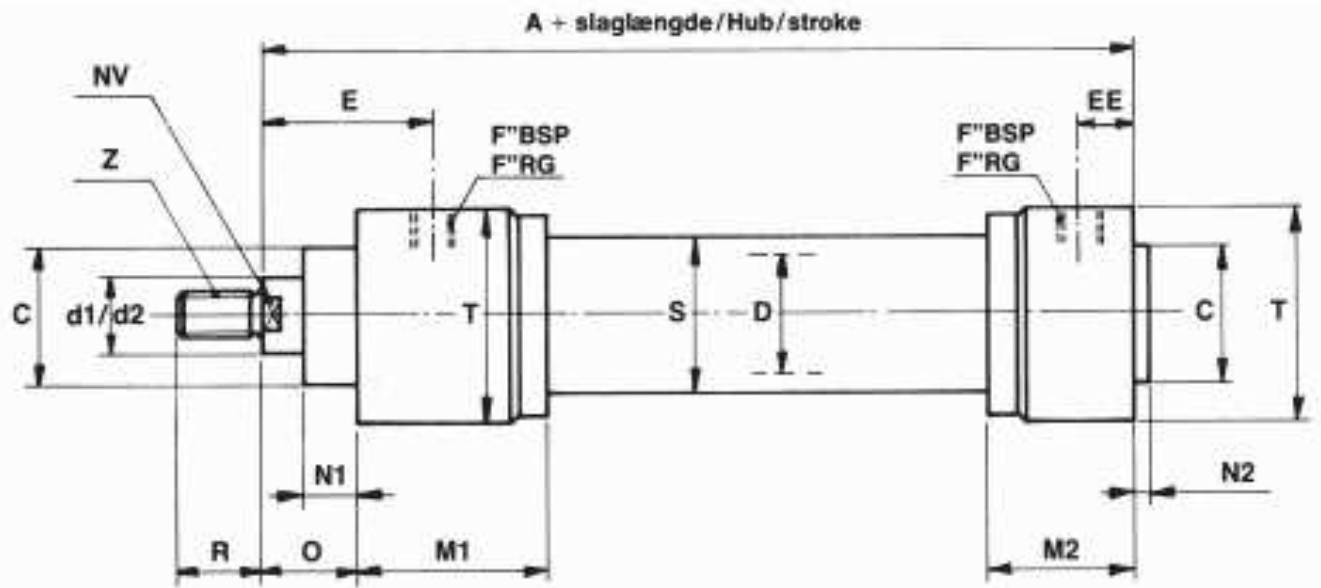


Hydraulik

Document 10000062165 - Version 00 - 201103



Målskitse / Maßblatt / Dimension sketch NH41-C



LJM

Hydraulik



Målskema / Maßtabelle / Dimension table

NH41-C

Index \ D	25	32	40	50	63	80	100	125	160	200
	A	150	170	190	205	224	250	300	325	370
B	162	186	206	225	249	282	332	357	406	490
d1 d2	14 18	18 22	22 28	28 36	36 45	45 56	56 70	70 90	90 110	110 140
C (F8/H9)	32	40	50	60	70	85	106	132	160	200
EE	13	15,5	18,5	19	21	21	29	27	35	43
E	64	68	72	76	90	110	128	145	154	205
F	1/4"	3/8"	1/2"	1/2"	3/4"	3/4"	1"	1"	1 1/4"	1 1/4"
G	75	92	106	126	145	165	200	235	280	340
GG	90	110	125	150	170	195	240	275	320	385
I	6,6	9	9	11	14	18	22	22	22	26
J	12	16	16	20	25	32	32	32	36	40
M1	70	80	92	92	104	126	146	166	187	247
M2	38	44	52	57	64	66	86	86	107	127
N1	15	19	19	24	29	36	37	37	41	45
N2	3	4	4	4	5	5	6	6	7	8
NV (d1)	12	14	17	22	28	36	46	60	75	95
NV (d2)	14	17	22	28	36	46	60	75	95	120
O	28	32	32	38	45	54	57	60	66	75
R (d1)	16	18	22	28	36	45	56	63	85	95
R (d2)	18	22	28	36	45	56	63	85	95	112
S	35	42	50	60	75	95	120	150	193	244
T	58	67	75	93	113	128	158	192	235	290
Z (d1)	M12x1,25	M14x1,5	M16x1,5	M20x1,5	M27x2	M33x2	M42x2	M48x2	M64x3	M80x3
Z (d2)	M14x1,5	M16x1,5	M20x1,5	M27x2	M33x2	M42x2	M48x2	M64x3	M80x3	M100x3

Alle angaben sind in (mm), falls anders angegeben.

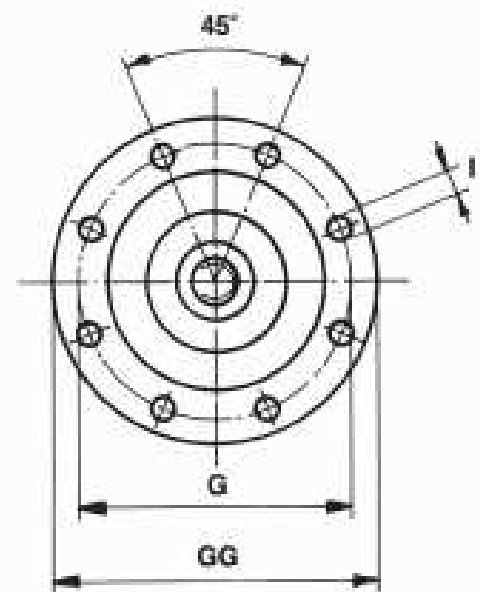
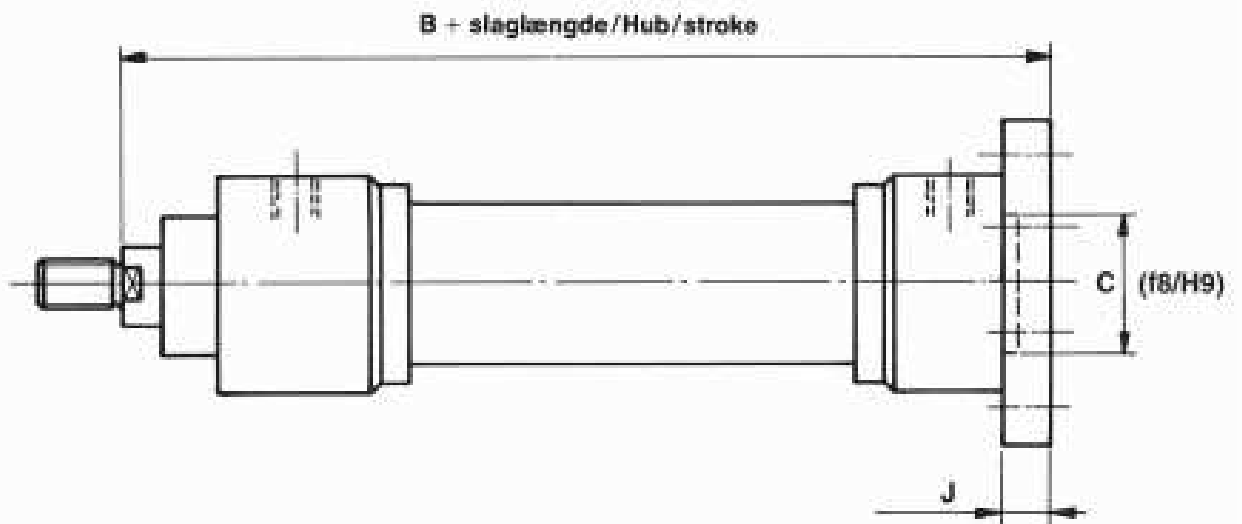
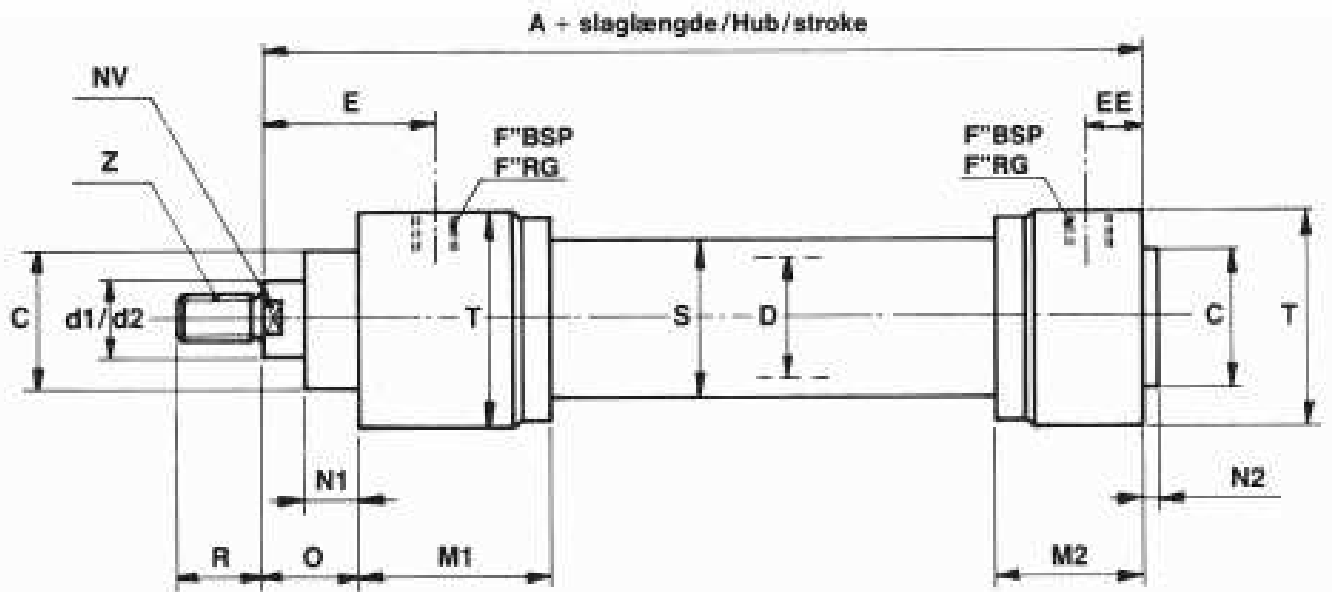
Alle angegebenen Maße sind in (mm). Wir behalten uns das Recht auf Änderungen vor.

Unless otherwise specified, all dimensions are in (mm). Right to alterations reserved.





Målskitse / Maßblatt / Dimension sketch NH41-C





Målskema / Maßtabelle / Dimension table

NH41-C

D Index	25	32	40	50	63	80	100	125	160	200
A	150	170	190	205	224	250	300	325	370	450
B	162	186	206	225	249	282	332	357	406	490
d1 d2	14 18	18 22	22 28	28 36	36 45	45 56	56 70	70 90	90 110	110 140
C (B/H9)	32	40	50	60	70	85	106	132	160	200
EE	13	15,5	18,5	19	21	21	29	27	35	43
E	64	68	72	76	90	110	128	145	154	205
F	1/4"	3/8"	1/2"	1/2"	3/4"	3/4"	1"	1"	1 1/4"	1 1/4"
G	75	92	106	126	145	165	200	235	280	340
GG	90	110	125	150	170	195	240	275	320	385
I	6,6	9	9	11	14	18	22	22	22	26
J	12	16	16	20	25	32	32	32	36	40
M1	70	80	92	92	104	126	146	166	187	247
M2	38	44	52	57	64	66	86	86	107	127
N1	15	19	19	24	29	36	37	37	41	45
N2	3	4	4	4	5	5	6	6	7	8
NV (d1)	12	14	17	22	28	36	46	60	75	95
NV (d2)	14	17	22	28	36	46	60	75	95	120
O	28	32	32	38	45	54	57	60	66	75
R (d1)	16	18	22	28	36	45	56	63	85	95
R (d2)	18	22	28	36	45	56	63	85	95	112
S	35	42	50	60	75	95	120	150	193	244
T	58	67	75	93	113	128	158	192	235	290
Z (d1)	M12x1,25	M14x1,5	M16x1,5	M20x1,5	M27x2	M33x2	M42x2	M48x2	M64x3	M80x3
Z (d2)	M14x1,5	M16x1,5	M20x1,5	M27x2	M33x2	M42x2	M48x2	M64x3	M80x3	M100x3

Alle angivne mål er i (mm). Ret til ændringer forbeholdes.

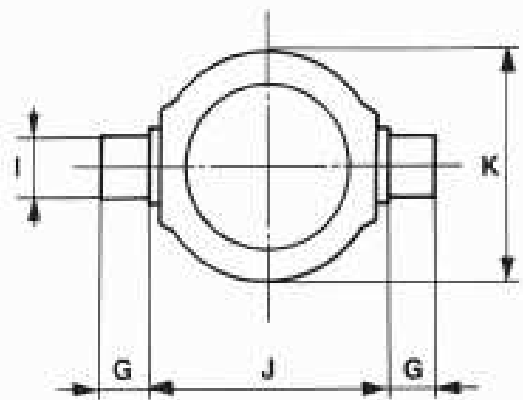
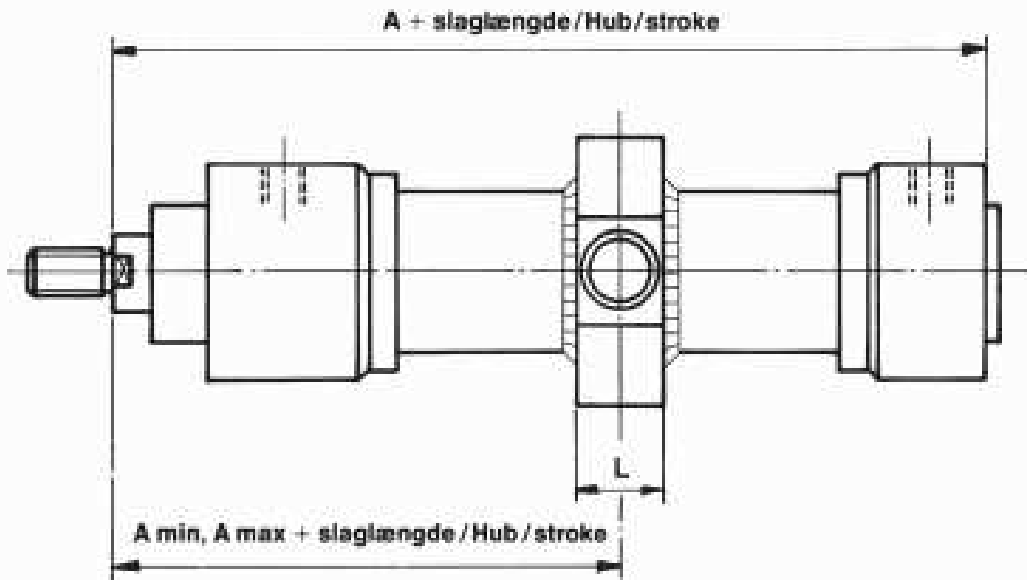
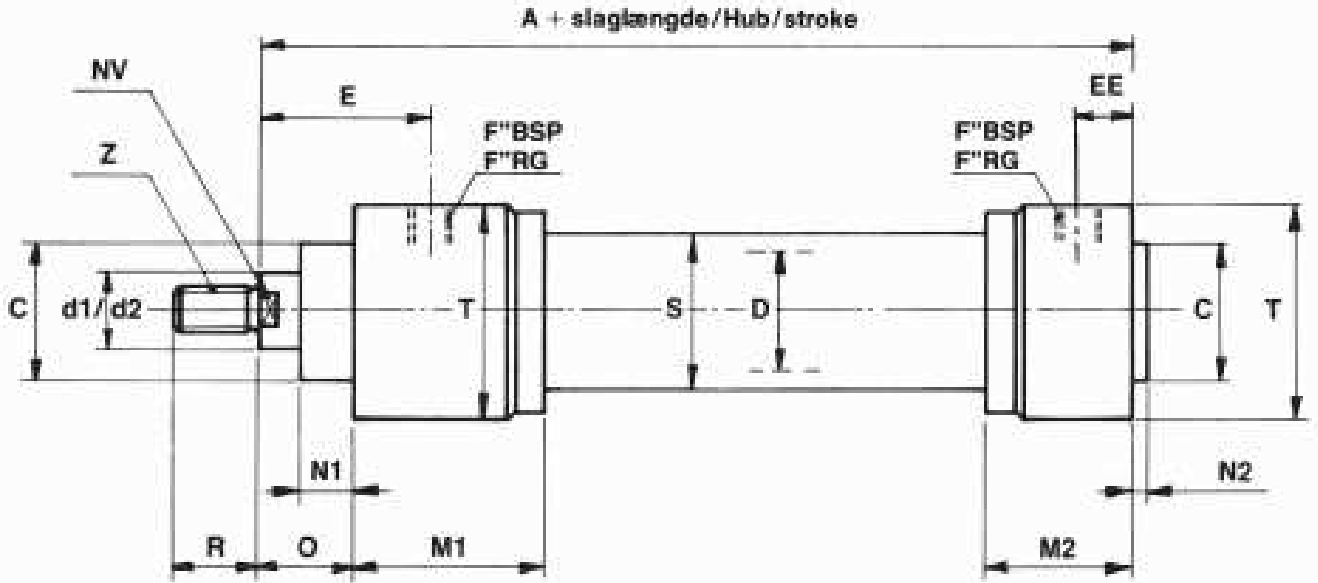
Alle angegebenen Maße sind in (mm). Wir behalten uns das Recht auf Änderungen vor.

Unless otherwise specified, all dimensions are in (mm). Right to alterations reserved.





Målskitse / Maßblatt / Dimension sketch NH41-V





Målskema / Maßtabelle / Dimension table

NH41-V

Index \ D	25	32	40	50	63	80	100	125	160	200
	A	150	170	190	205	224	250	300	325	370
A min	115	131	146	157	180	217	246	280	313	393
A max	95	106	116	122	130	147	171	185	203	253
d1 d2	14 18	18 22	22 28	28 36	36 45	45 56	56 70	70 90	90 110	110 140
C (f8)	32	40	50	60	70	85	106	132	160	200
E	64	68	72	76	90	110	128	145	154	205
EE	13	15,5	18,5	19	21	21	29	27	35	43
F	1/4"	3/8"	1/2"	1/2"	3/4"	3/4"	1"	1"	1 1/4"	1 1/4"
G	10	12	16	20	25	32	40	50	63	80
I (f8)	12	16	20	25	32	40	50	63	80	100
J (h12)	63	75	90	105	120	135	160	195	240	295
K	66	70	79	98	118	133	163	197	240	295
L	25	30	35	40	45	60	70	90	100	120
M1	70	80	92	92	104	126	146	166	187	247
M2	38	44	52	57	64	66	86	86	107	127
N1	15	19	19	24	29	36	37	37	41	45
N2	3	4	4	4	5	5	6	6	7	8
NV (d1)	12	14	17	22	28	36	46	60	75	95
NV (d2)	14	17	22	28	36	46	60	75	95	120
O	28	32	32	38	45	54	57	60	66	75
R (d1)	16	18	22	28	36	45	56	63	85	95
R (d2)	18	22	28	36	45	56	63	85	95	112
S	35	42	50	60	75	95	120	150	193	244
T	58	67	75	93	113	128	158	192	235	290
Z (d1)	M12x1,25	M14x1,5	M16x1,5	M20x1,5	M27x2	M33x2	M42x2	M48x2	M64x3	M80x3
Z (d2)	M14x1,5	M16x1,5	M20x1,5	M27x2	M33x2	M42x2	M48x2	M64x3	M80x3	M100x3
*) Min. slaglængde	20	25	30	35	50	70	75	95	110	140

*) Ønskes mindre slaglængde monteres distancebøsning.

Wird ein geringerer Hub gewünscht, werden Abstandhülsen montiert.

If a shorter stroke is required, a spacing bush should be fitted.

All dimensions are in (mm). Right to alterations reserved.

Alli angegeneren Maße sind in (mm). Wir behalten uns das Recht auf Änderungen vor.

Unless otherwise specified, all dimensions are in (mm). Right to alterations reserved.

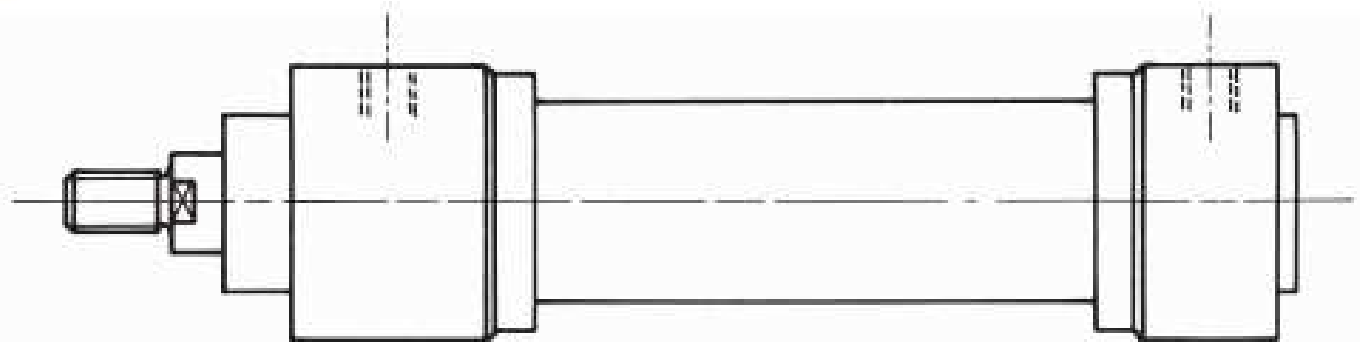




Oversigtsblad
for NH 42 cylinder

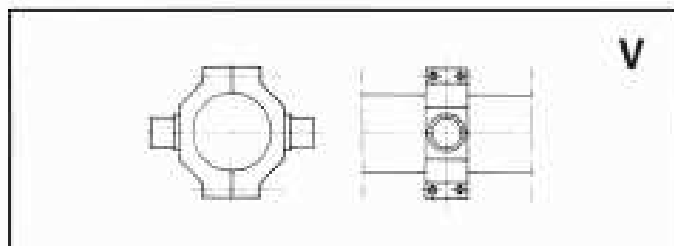
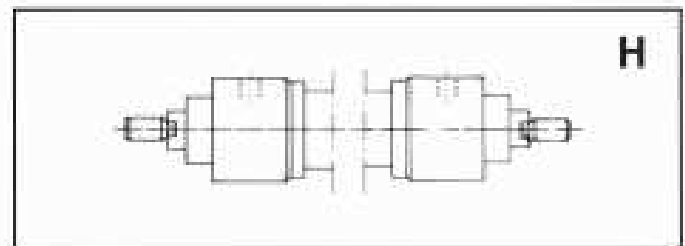
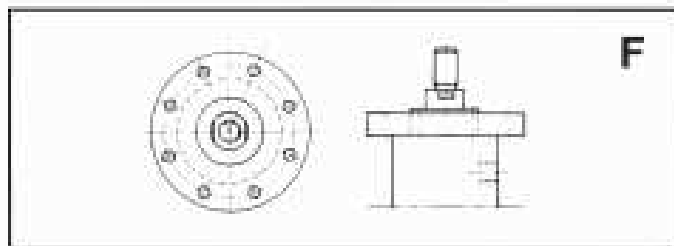
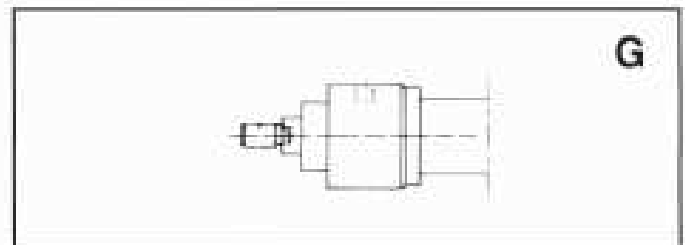
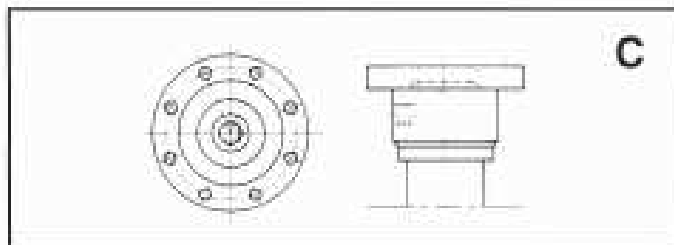
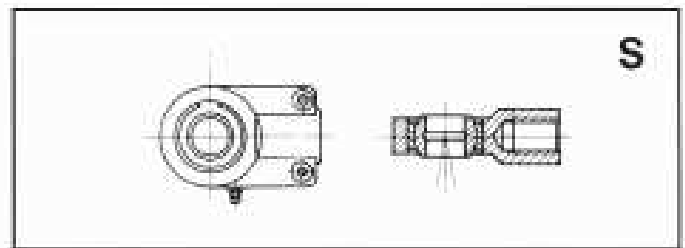
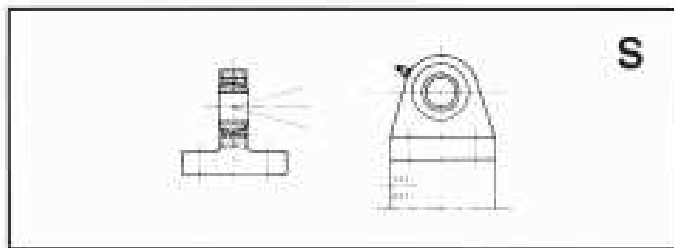
Übersicht
für NH 42 Zylinder

Design features
for NH 42 cylinder



* Grundtyper/
Zylinderbefestigung/
Basic types

Stempelstangsophæng/
Kolbenstangenbefestigung/
Piston rod mounting



LJM

Hydraulik

Document 10000062165 - Version 00 - 201102



Dutch Hydraulic Consultants	Tel.	+31-(0)6-83695868
Achterweg ZZ 8	Mail	info@dhc-hydraulic.nl
3216AB Abbenbroek	Web	www.dhc-hydraulic.nl
Nederland		