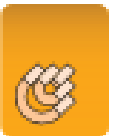
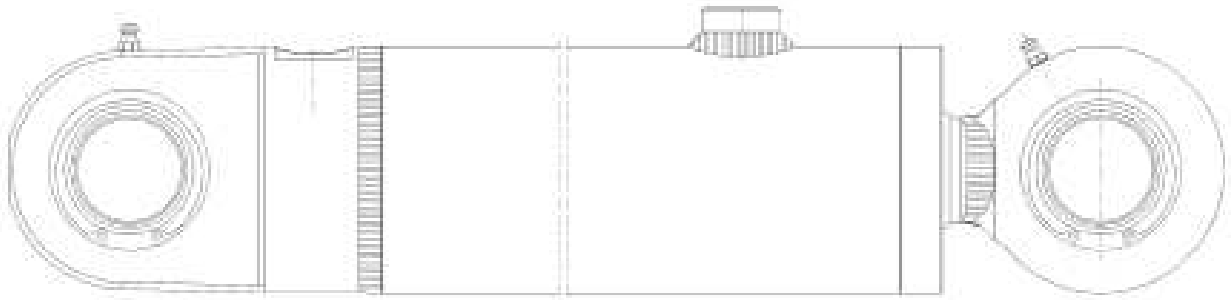




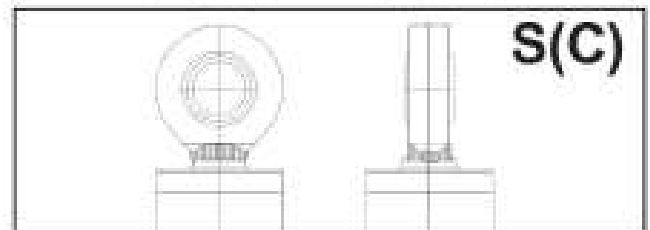
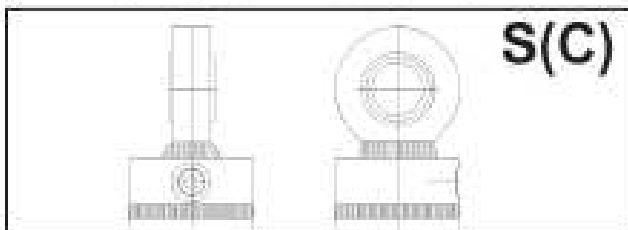
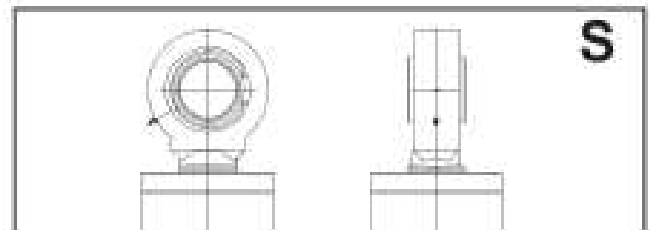
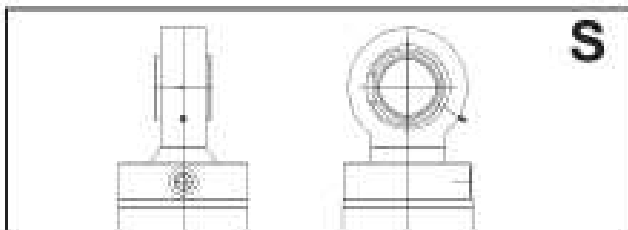
NH75





* Grundtyper/
Zylinderbefestigung/
Basic types

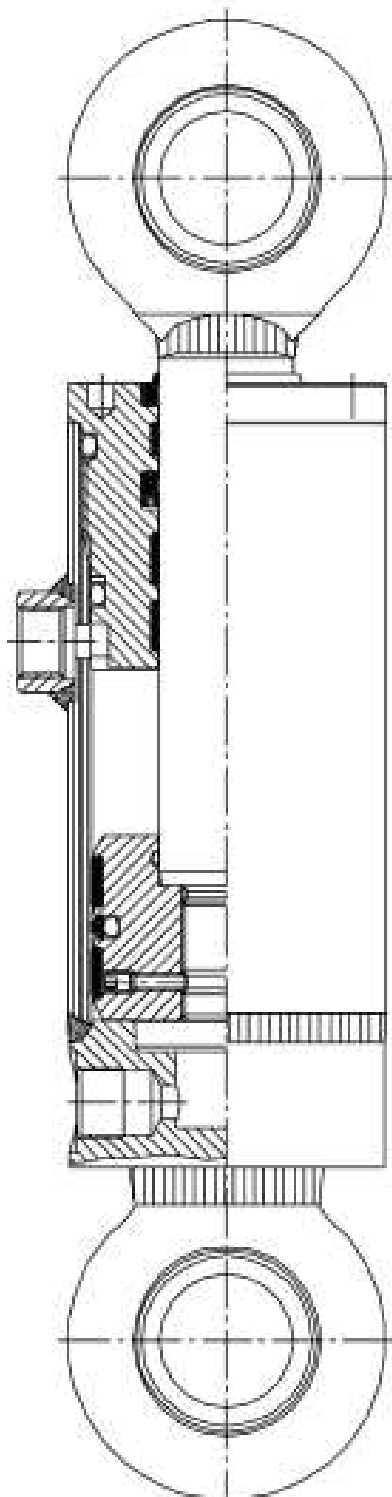
Stempelstangsophæng/
Kolbenstangenbefestigung/
Piston rod mounting





Technical specification

NH75



General:

NH75 is a double acting hydraulic cylinder.
Approved by Det Norske Veritas (DNV).
Application: Marine – Offshore and Mobile.
Bore from \varnothing 50 to \varnothing 320 mm.

Construction:

(See sketch).

Cylinder tube:

Steel S355J2G3C (SIS 2172).
Inside surface: Ra max 0,3 μ m.
Internal tolerance H9.

Piston rod:

Steel 20MnV6 (SIS 2142).
Stainless steel X4CrNiMo16-5-1 (SIS 2387).
Hard chrome plated.

Seals:

(Recognized manufactures).

Mountings:

(See design features).

- S: Spherical eye in steel.
- S(C): Spherical eye in composite.
- S(K): Spherical bearing with bronze inner ring

Connections:

Cylindrical BSP thread, according to
DIN 3852: Part 2. November.1991.

Operating pressure:

Design pressure 250 Bar.

Piston velocity:

Max. piston velocity: 0,3 m/ sec
For higher speed, please ask LJM.

Operating temperature:

Temperature range: - 20°C to + 80°C.
For higher/lower temperatures, please ask LJM.

Pressure medium:

Hydraulic oil on mineral oil base.
If another medium is to be used, please state when ordering.

Test:

The cylinders are pressure tested at 350 Bar and tested
for proper function, before leaving the factory.

Order code:

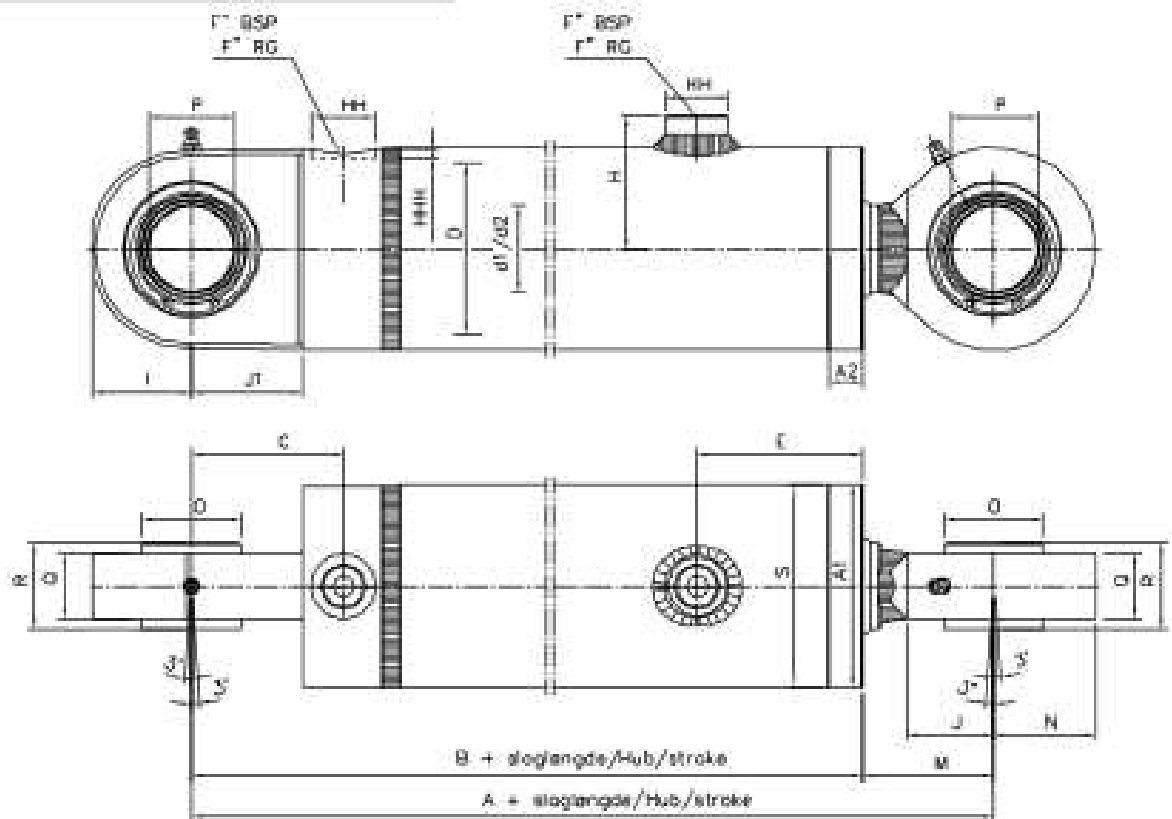
See specification form 13.



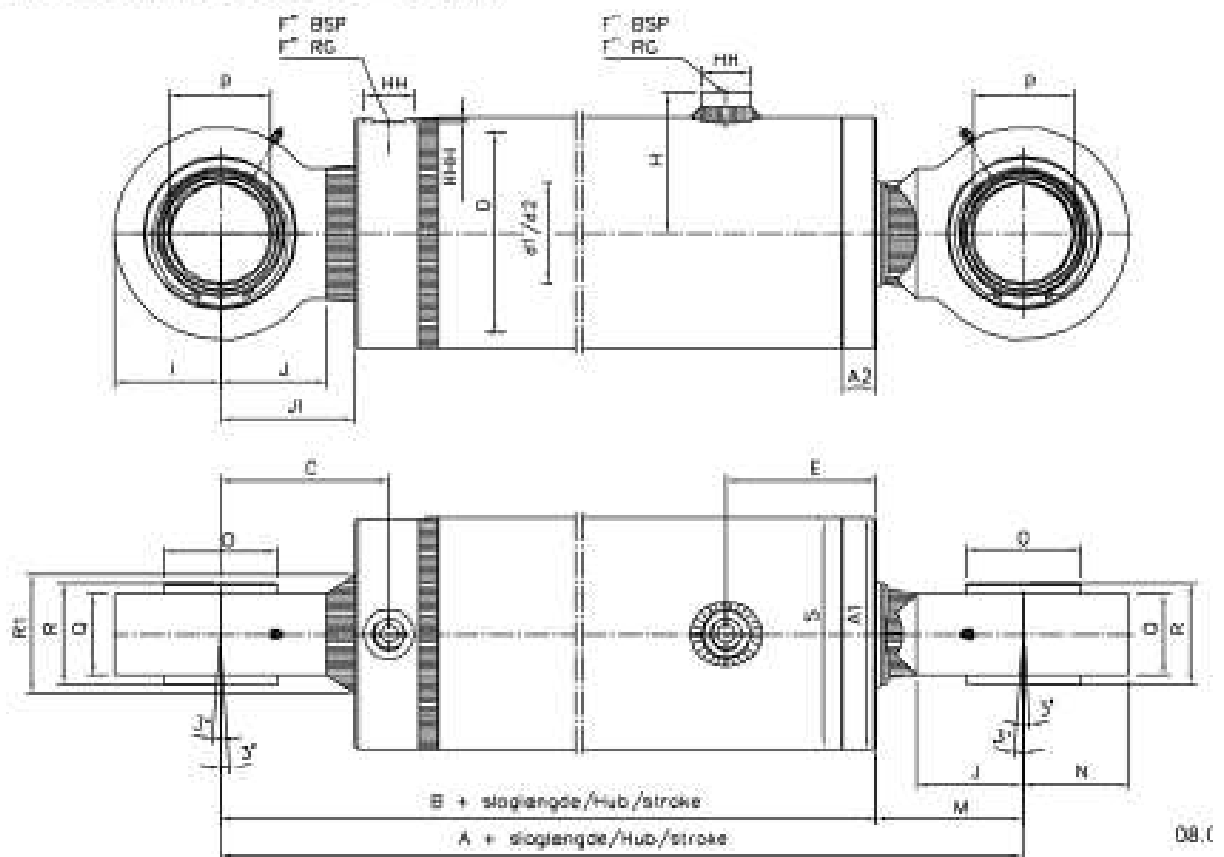


Målskitse/Maßblatt/Dimension sketch NH75-S

Diameter/Bohrung/Bore: $\varnothing 50 - 140$ mm



Diameter/Bohrung/Bore: $\varnothing 160 - 320$ mm



LJM

Hydraulik



Målskema/Maßtabelle/Dimension table

NH75-S

D Index	50	63	80	100	125	140	160	180	200	220	250	280	300	320
A	248	255	297	357	413	448	492	530	585	620	630	710	790	845
A1	60	75	95	115	145	160	185	205	230	245	285	323,9	355,9	368
A2	8	8	12	12	15	20	25	30	35	38	40	40	45	45
B	194	201	236	268	317	346	375	406	445	466	476	528	580	620
C	62,5	65	71	99	113	199	135	147	160	175	175	203	226	259
D	50	63	80	100	125	140	160	180	200	220	250	280	300	320
d1/d2	25/32	30/40	40/50	50/65	65/80	70/90	80/100	90/110	100/125	110/140	125/160	140/180	160/200	180/220
E	58,5	60,5	77,5	80,5	97,5	112,5	120,5	132,5	142,5	147,5	158,5	167,5	177,5	179,5
F	3/8"	1/2"	1/2"	1/2"	3/4"	3/4"	3/4"	1"	1"	1"	1"	1"	1 1/4"	1 1/4"
H	45	52,5	62,5	72,5	93	100,5	113	130,5	143	151	171	190,5	206,3	212,5
HH	25	30	30	30	40	40	40	50	50	50	50	50	60	60
HHH	2,1	2,5	2,5	2,5	2,5	2,5	2,5	2,5	2,5	2,5	2,5	2,5	2,5	2,5
I	39	39	46	59	70	75	85	95	110	120	130	160	170	180
J	35,5	35,5	40,5	65	70	73	85	90	100	110	106	130	145	170
J1	45	45	52	80	87	93	108	115	128	142	142	170	185	210
M	54	54	61	89	96	102	117	124	140	154	154	182	200	225
N	40	40	47,5	60	70	75	85	95	110	120	130	160	170	180
O	30	38	46	57	68	79	91	99	113	124	138	155,9	170	170
P	25	32	40	50	60	70	80	90	100	110	125	140	160	160
Q	24	24	30	45	53	60	65	70	80	95	95	110	130	140
R	25	32	40	50	54	70	80	90	100	110	125	90	105	105
-R1							88	95	108	127	131	150	170	180
S	60	75	95	115	145	160	185	205	230	254	285	323,9	355,9	368

Alle angivne mål er i (mm). Ret til ændringer forbeholdes.

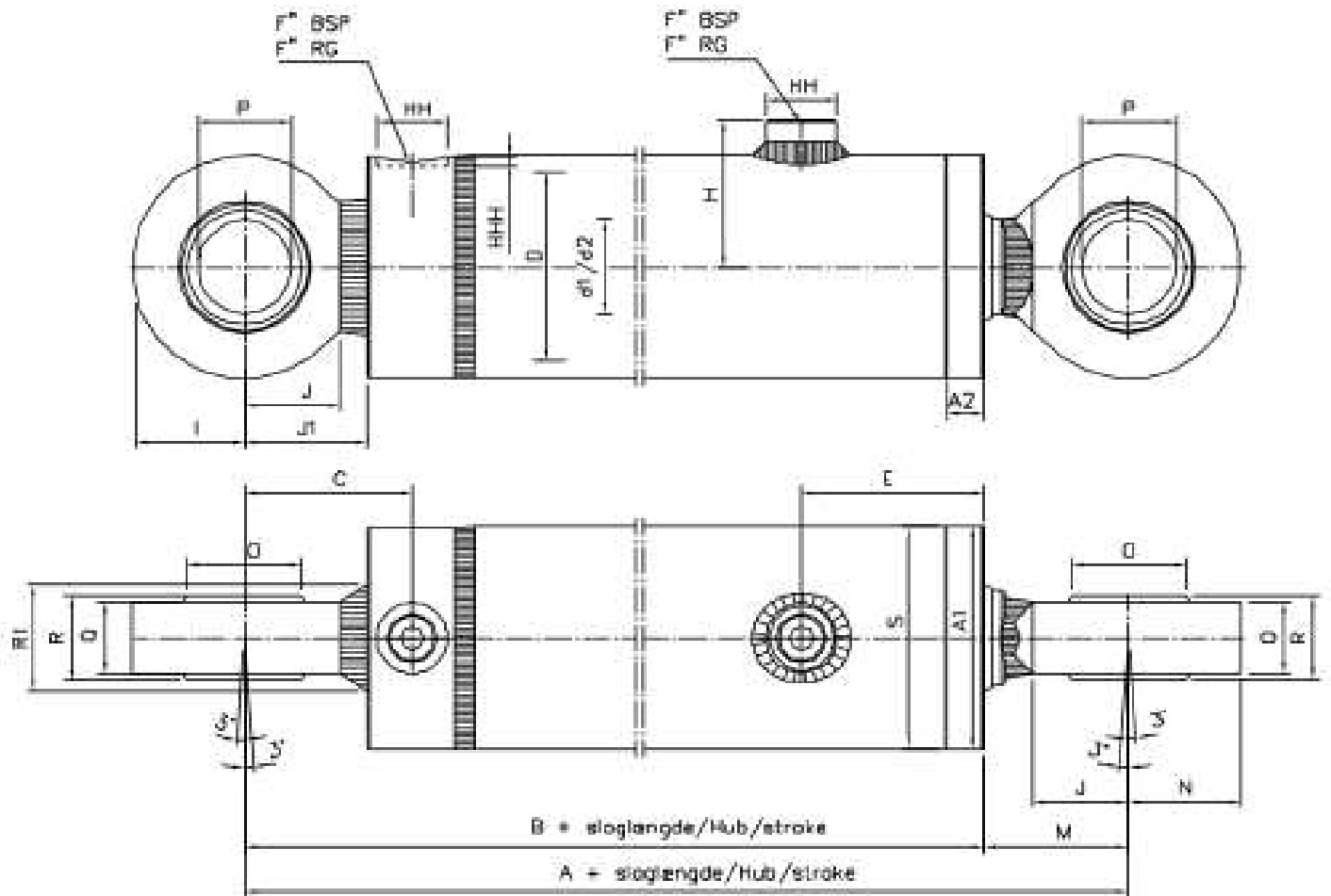
Alle angegebenen Maße sind in (mm). Wir behalten uns das Recht auf Änderungen vor.

Unless otherwise specified, all dimensions are in (mm). Right to alterations reserved.





Målskitse/Maßblatt/Dimension sketch NH75-S(C)





Målskema/Maßtabelle/Dimension table NH75-S(C)

D Index	50	63	80	100	125	140	160	180	200	220	250	280	300	320
A	248	255	297	357	413	448	492	530	585	620	630	710	780	845
A1	60	75	95	115	145	160	185	205	230	245	285	323,9	355,9	368
A2	8	8	12	12	15	20	25	30	35	38	40	40	45	45
B	194	201	236	268	317	346	375	408	445	466	476	528	580	620
C	62,5	65	71	99	113	199	135	147	160	175	175	203	226	259
D	50	63	80	100	125	140	160	180	200	220	250	280	300	320
d1/d2	25/32	30/40	40/50	50/65	65/80	70/90	80/100	90/110	100/125	110/140	125/160	140/180	160/200	180/220
E	59,5	60,5	77,5	89,5	97,5	112,5	120,5	132,5	142,5	147,5	156,5	167,5	177,5	179,5
F	3/8"	1/2"	1/2"	1/2"	3/4"	3/4"	3/4"	1"	1"	1"	1"	1"	1 1/4"	1 1/4"
H	45	52,5	62,5	72,5	93	100,5	113	130,5	143	151	171	190,5	206,3	212,5
HH	25	30	30	30	40	40	40	50	50	50	50	50	60	60
HHH	2,1	2,5	2,5	2,5	2,5	2,5	2,5	2,5	2,5	2,5	2,5	2,5	2,5	2,5
I	40	40	47,5	60	70	75	85	95	110	120	130	160	170	180
J	35,5	35,5	40,5	65	70	73	85	90	100	110	106	130	145	170
J1	45	45	52	80	87	93	108	115	128	142	142	170	185	210
M	54	54	61	89	96	102	117	124	140	154	154	182	200	225
N	40	40	47,5	60	70	75	85	95	110	120	130	160	170	180
O	40,35	40,35	50,75	55,9	67,08	75,99	84,85	96,05	107,24	118,43	132,5	148,36	160,1	169,93
P	25	32	40	50	60	70	80	90	100	110	125	140	150	160
Q	24	24	30	45	53	60	65	70	80	95	95	110	130	140
R	26	26	32	50	60	65	70	80	90	100	100	125	145	105
-R1	33	33	41	60	70	80	86	95	108	127	131	150	170	180
S	60	75	95	115	145	160	185	205	230	254	285	323,9	355,9	368

Alle angivne mål er i (mm). Ret til ændringer forbeholdes.

Alle angegebenen Maße sind in (mm). Wir behalten uns das Recht auf Änderungen vor.

Unless otherwise specified, all dimensions are in (mm). Right to alterations reserved.





Specification form 13

Order code NH75

NH 75-X-X-X-D/d x L-X-X-X-()

Type: _____

Design code _____

Basic types: _____

Blank: No mounting

S: Spherical bearing

S(C): Spherical bearing with composite

S(K): Spherical bearing with bronze

* **Special seals:**

TN: Teflon
TV: Teflon- viton
PK-40: - 40° C.

Function: _____

D: Double acting

E_c: Single acting, compressive

E_t: Single acting, tractive

Cylinder bore: _____

Piston rod diameter: _____

Stroke: _____

Limited length of stroke according to DNV type approval

Piston rod material:
R: Stainless
Blank: Steel
(all hard chrome plated)

Digit: Length of distance bush
Digit in () = Extension of piston rod

Piston rod mounting:
S: Spherical bearing
S(C): Spherical bearing with composite

* Special seals to be used under extreme conditions, i.e. where pressure, velocities, temperature and pressure media fall outside the technical specifications. Ask the adviser for guidance.





DNV

DET NORSKE VERITAS TYPE APPROVAL CERTIFICATE

CERTIFICATE NO. P-13196
This Certificate consists of 4 pages

This is to certify that the
Hydraulic Cylinders
with type designation(s)
NH75

Manufactured by
Lind Jensens Maskinfabrik A/S
LEM ST., Denmark

is found to comply with
Det Norske Veritas' Rules for Classification of Ships
Det Norske Veritas' Offshore Standards
DNV Standard for Certification 2.9, 5-778.93 Approval of hydraulic cylinders

Application
Hydraulic cylinders for ordinary use, not for steering gear or where a mechanical lock inside the cylinder is required by the Rules

Max work press. push	250 bar
Max work press. pull	250 bar
Cylinder sizes	Cylinder tube inner diameter from 50 to 320 mm

Place and date
Harvik, 2013-06-29
for DET NORSKE VERITAS AS

Helge Drange
Head of Section



Local Office
DNV Fredericia

This Certificate is valid until
2013-06-30

Carl Ulrik Simonsen
Carl Ulrik Simonsen
Surveyor

Notice: This Certificate is subject to terms and conditions overleaf. Any significant change in design or construction may render this Certificate invalid. The validity date relates to the Type Approval Certificate and not to the approval of equipment/systems installed.

If any person holds any of the rights which are reserved to the licensor by any copyright or by trademark or by patent or by other intellectual property rights, the licensor hereby grants the licensee the right to use the information contained in this certificate for the purpose of the certificate. The licensor hereby grants the licensee the right to use the information contained in this certificate for the purpose of the certificate. The licensor hereby grants the licensee the right to use the information contained in this certificate for the purpose of the certificate.





NH75



Lind Jønsens Maskinfabrik A/S
Kroghusvej 7, Højmark
DK-6940 Lem St. • Denmark
Home page: www.ljm.dk



Hydraulik



Dutch Hydraulic Consultants	Tel.	+31-(0)6-83695868
Achterweg ZZ 8	Mail	info@dhc-hydraulic.nl
3216AB Abbenbroek	Web	www.dhc-hydraulic.nl
Nederland		