



**MANUFACTURING**  
THE PRODUCTION LINE OF HANSA-TMP

HT 2400 / A / 120 / 0911 / E / V

# HANSA-TMP HYDRAULIC GENERATORS HIGH QUALITY ELECTRICITY

## For use with Agricultural Tractors



HANSA-TMP is an Italian manufacturer, that engineers hydraulic components to a very high standard: In the field of hydraulic generators we can provide standard solution, suitable for use with agricultural tractors.

The generators with power up to 10 kVA at 50 HZ ,mono-phase or three phases are driven by a hydraulic gear motor, controlled by a section of the auxiliary spool valve of the tractor. This solution allows to eliminate the universal joint, typical of the solutions currently on the market.

Groups, compared to the solution with multiplier and universal joint, offer the following advantages:

- Lighter weight, the group lacks the gearbox, thus easier to handle;
- No organ in the rotation, no need for a universal joint, tool known to frequent source of very serious accidents;
- Easy connection to the tractor, only an pipe line to the motor and return line;
- Availability of the PTO of the tractor for other uses;
- Possibility of power even in the absence of the auxiliary valves of the group, thanks to the various pressure and flow control; valve block.
- Maximum working pressure of 150 bar, so suitable for every type of tractor.

#### **Standard Features:**

- Frequency: 50HZ
- AC current mono-phase or three phases
- Designed to provide clean and quiet power with low oscilation
- Automatic voltage regulation accuracy ( $\pm 5\%$ )
- Total harmonic distorsion less than 3%
- CEE or Schuko sockets
- Standard protection class: IP 23

#### **On request:**

- Different voltages
- Tropicalized wending
- Different types of accessories, such as switches, voltmeters, battery charger, sockets
- Integrated flangeable valve blocks with flow regulator relief function and anti-cavitatiion circuit

50Hz FREQUENCY						
Electric				Hydraulic		
Generator Model	kVA	Number of Phases	Alternator Speed rpm	Min. Inlet Flow l/min	Max. Pressure bar	Motor Type
HTG 3,5 - 50	3,5	Single Phase 115 / 230 V	3.000	27	160	Gear
HTG 4,5 - 50	4,5			27		
HTG 6,0 - 50	6,0			36		
HTG 7,0 - 50	7,0			45		
HTG 8,0 - 50	8,0			52		
HTG 10,0 - 50	10,0			60		
HTG 5,5 - 50	5,5	Three Phases 230 / 400 V		36		
HTG 7,0 - 50	7,0			45		
HTG 9,0 - 50	9,0			62		
HTG 10,0 - 50	10,0			65		

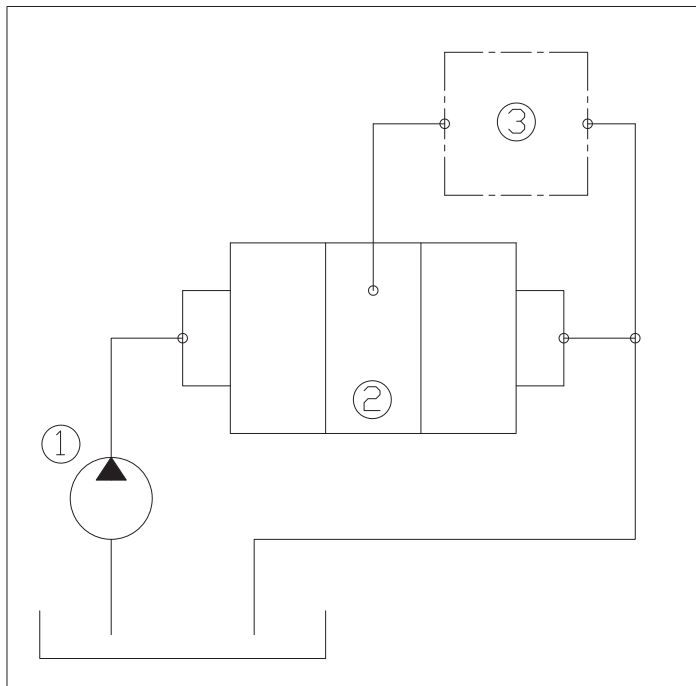
## PRIORITY VALVE For fixed displacement pumps

The manifold includes all the required valves to allow the generator to operate without the need of any other parts. It can incorporate a pressure compensated flow regulator, a relief valve, an anticavitation circuit and a remote by pass function.

To install simply connect the pressure line to the gear motor entrance (P) and a tank return line from the outlet of the motor (T).

The regulated flow to the gear motor gives high rotation stability to the generator. Excess of oil is returned to tank or can be used under pressure, depending from the type of priority valve.

The function of the generator can be excluded with a by pass device integrated in the priority valve.



**HYDRAULIC CIRCUIT:**

**TRACTOR WITH AUXILIARY SPOOL VALVE**

1 - PUMP OF THE TRACTOR

2 - AUXILIARY SPOOL VALVE

3 - COMPLETE GENERATOR GROUP

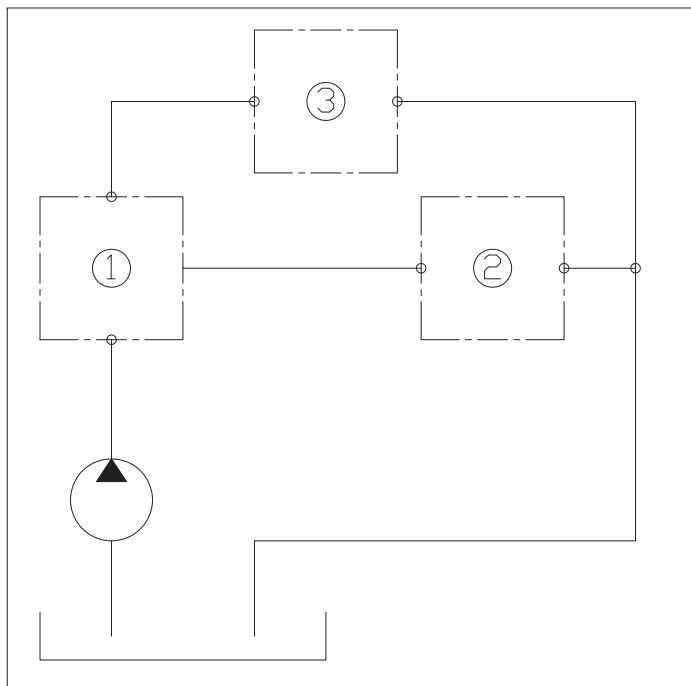
**HYDRAULIC CIRCUIT:**

**TRACTOR WITHOUT AUXILIARY SPOOL VALVE**

1 - INTEGRATED VALVE BLOCK WITH FLOW CONTROL, RELIEF FUNCTION AND ANTI-CAVITATION CIRCUIT

2 - OTHER HYDRAULICS OF THE TRACTOR

3 - COMPLETE HTG GENERATOR GROUP



Dutch Hydraulic Consultants BV	Tel. : +31-(0)6-83695868
Achterweg ZZ 8	Mail : <a href="mailto:info@dhc-hydraulic.nl">info@dhc-hydraulic.nl</a>
3216 AB Abbenbroek	Web : <a href="http://www.dhc-hydraulic.nl">www.dhc-hydraulic.nl</a>
Nederland	