



HYDRAULIC COMPONENTS  
HYDROSTATIC TRANSMISSIONS  
GEARBOXES - ACCESSORIES

HT 05 / B / 01A / 1002 / E / V

# MULTIPURPOSE GEARBOXES

## 300 Series

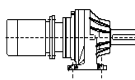
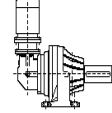
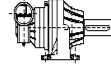


### PRODUCT FEATURES

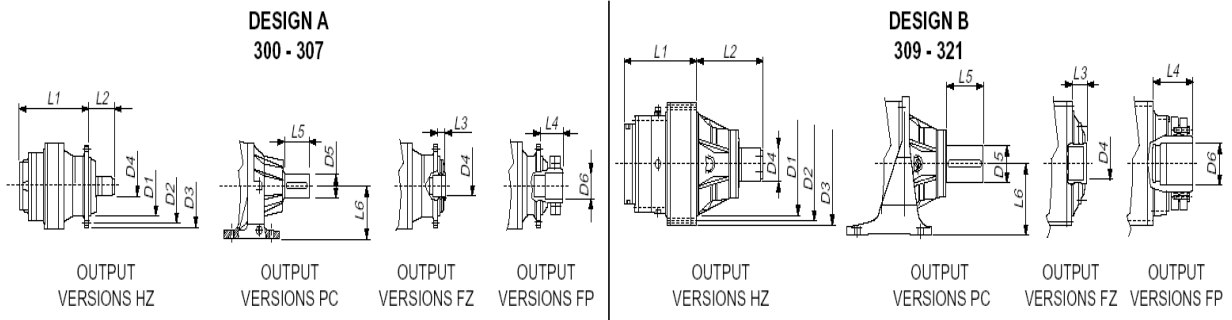
- Modular construction, numerous configurations available in 14 frame sizes with torque capacity up to 450.000 Nm and power up to 450 kW.
- Reduction ratios ranging from 3,4 to 5,000.
- In line or right angle configurations with bevel or worm inputs (for high reduction ratios)
- Flanged, foot or shaft mounted output.
- Output shafts:
  - with keyway
  - splined
  - splined hollow
  - hollow shaft with shrink disc
- Inputs for:
  - electric motors
  - hydraulic motors
- Optional hydraulically released failsafe brake, in combination with units operated by hydraulic motors.
- Accessories for output shafts:

## MULTIPURPOSE GEARBOXES 300 Series

### Technical Informations

Type	Max. torque  Nm	Max. power  kW	Max. input speed  RPM	Ratios			Design
				 Inline	 Right angle	 Combined with worm gear	
300	1000	20	3000	3.4 - 2700	7 - 700	400 - 2300	A
301	1750	30	3000	3.4 - 2700	7 - 700	400 - 2300	A
303	2500	40	3000	3.6 - 2800	9 - 800	400 - 2400	A
305	5000	60	3000	3.6 - 2800	9 - 800	400 - 2400	A
306	8500	75	2500	3.6 - 2900	9 - 800	400 - 2600	A
307	12500	100	2500	3.4 - 2400	13 - 700	400 - 2500	A
309	18500	130	2500	3.4 - 2400	13 - 700	400 - 2500	B
310	25000	150	2000	4 - 2500	40 - 900	400 - 5000	B
311	35000	180	2000	4 - 2100	18 - 800	400 - 5000	B
313	50000	200	2000	4 - 2200	18 - 800	400 - 5000	B
315	80000	250	1500	4 - 1800	70 - 900	400 - 5000	B
317	150000	300	1000	4 - 1900	70 - 900	400 - 5000	B
319	300000	380	500	4.8 - 1400	300 - 800	2500 - 5000	B
321	450000	450	300	4.4 - 1100	300 - 800	1000 - 5000	B

### Dimensions



Type	Dimensions											
	D1	D2	D3	D4	D5	D6	L1 2 STAGES	L2	L3	L4	L5	L6
300	110	165	185	40x36 DIN 5482	38	42	168	61	14	50	58	100
301	110	165	185	40x36 DIN 5482	50	42	180	61	14	50	82	132
303	150	195	222	58x53 DIN 5482	60	75	200	83	15	85	105	160
305	150	195	222	58x53 DIN 5482	60	75	230	83	15	85	105	160
306	200	250	280	70x64 DIN 5482	80	90	260	130	40	115	130	180
307	230	295	325	80x74 DIN 5482	90	100	300	162	36	120	170	200
309	278	314	348	80x74 DIN 5482	100	120	215	231	82	245	165	225
310	340	370	400	100x94 DIN 5482	110	130	245	290	95	290	210	250
311	358	390	428	100x94 DIN 5482	120	135	250	320	88	190	210	280
313	385	415	445	120x3 DIN 5480	140	145	310	357	81	235	200	280
315	460	503	542	150x5 DIN 5480	160	180	390	429	98	260	240	315
317	560	635	695	200x5 DIN 5480	200	260	470	352	152	318	260	415
319	800	880	940	260x5 DIN 5480	280	350	570	470	210	440	380	550
321	940	1020	1100	300x8 DIN 5480	340	390	595	500	250	440	540	650

For further information please ask for cat. HT 05/B/01A/94



Dutch Hydraulic Consultants	Tel.	+31-(0)6-83695868
Achterweg ZZ 8	Mail	<a href="mailto:info@dhc-hydraulic.nl">info@dhc-hydraulic.nl</a>
3216AB Abbenbroek	Web	<a href="http://www.dhc-hydraulic.nl">www.dhc-hydraulic.nl</a>
Nederland		